

HARLEQUIN

TILE COLLECTION



IN COLLABORATION WITH

The
Branded Tile
Company

@harlequinfw | harlequin.sandersondesigngroup.com

Manufactured under license for Harlequin by The Branded Tile Co.
brandedtilecompany.com | info@brandedtilecompany.com | @brandedtilecompany



BODEGA - INDIGO/AMAZONIA

HARLEQUIN

HARLEQUIN GOES OUT ON THE TILES

Harlequin is delighted to team up with The Branded Tile Company to launch a stunning new collection of porcelain floor and wall tiles.

Providing an exciting decorating option for interiors of all styles, the range is perfect for adding personality and pattern to internal floors and walls in all living spaces, from kitchens to bathrooms.

Claire Greenfield, lead designer at Harlequin says, "We're thrilled to see our designs translated onto porcelain for the very first time. A wonderful extension to the Harlequin portfolio, these tiles open up a range of design choices for interior lovers, providing a stunning addition to any space."

Available in a range of colours, featuring four expressive Harlequin designs, Enigmatic's contemporary artwork and Tessellation's captivating geometric have been interpreted onto striking hexagon-shaped tiles. Bodega and Sumi continue the urban aesthetic, with a modern square tile.

John Chater, founder and managing director at The Branded Tile Company says "Harlequin has been a trend leader in the interiors space for many years with its contemporary fabric, wallpaper, and home furnishings and now with this complimentary tile range we are excited to see more of their statement designs in rooms across the country."

For inspiration and design ideas visit:

@harlequinfw | [harlequin.sandersondesigngroup.com](https://www.harlequin.sandersondesigngroup.com)

Manufactured under license for Harlequin by



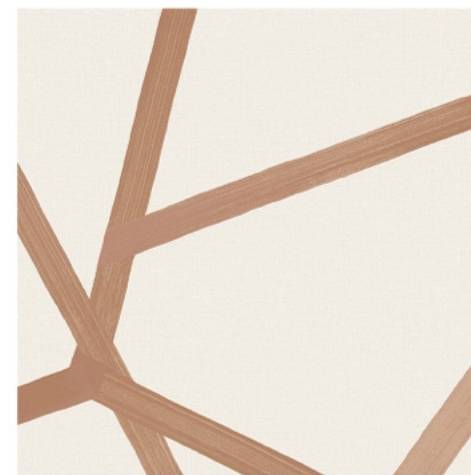


SUMI - FRENCH OCHRE

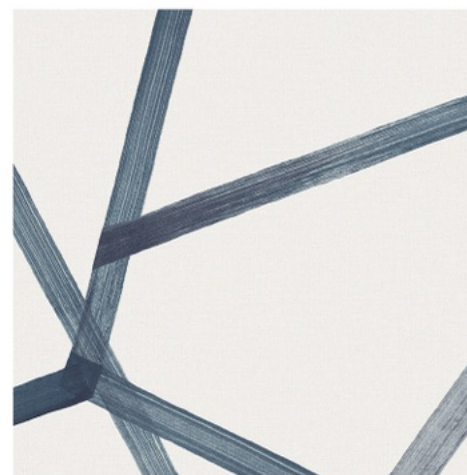
SUMI



BLACK EARTH



GROUNDING



JAPANESE INK



FRENCH OCHRE

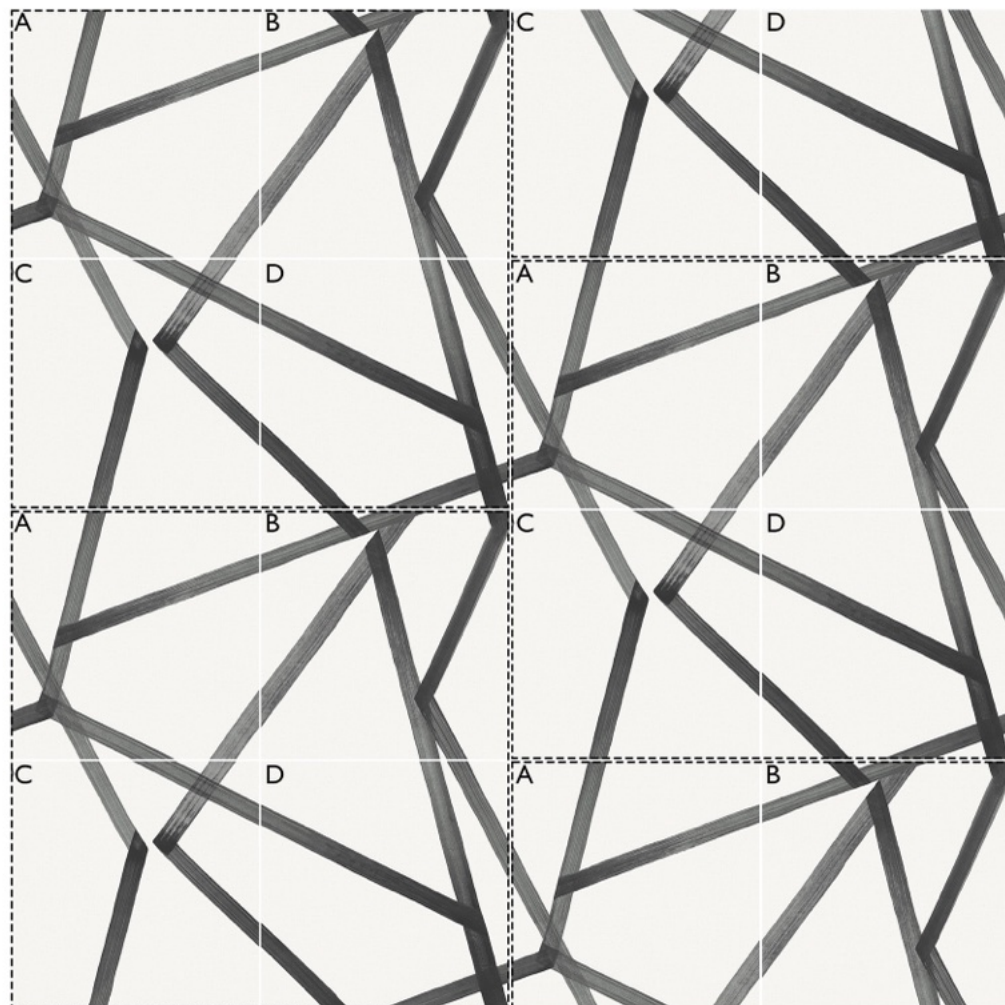
A large-scale geometric, Sumi's clean painted lines are associated with oriental design.

Smart and striking, each tile measures 200mm x 200mm.

200 x 200 x 9mm / Porcelain / Matt / Indoors / Wall & Floor

GET THE LOOK

To achieve the stunning repeating pattern of Sumi the four tiles are arranged in a half drop repeat as seen below.



Scan the QR code to view our 'GET THE LOOK' page explaining how to arrange your tiles.



SUMI - GROUNDED

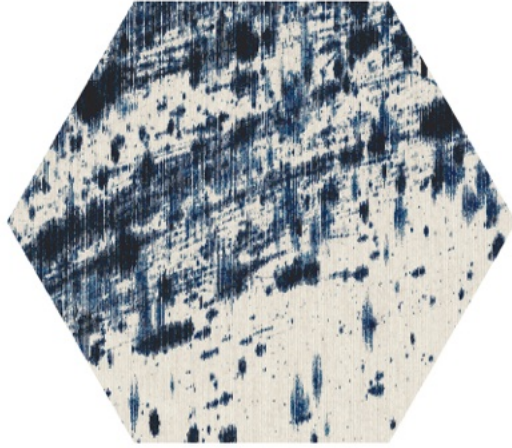


SUMI - BLACK EARTH

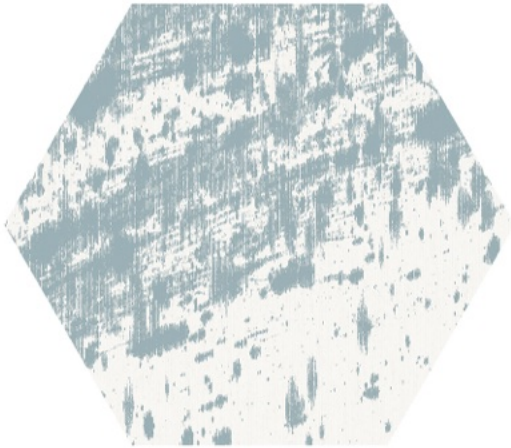


SUMI - JAPANESE INK

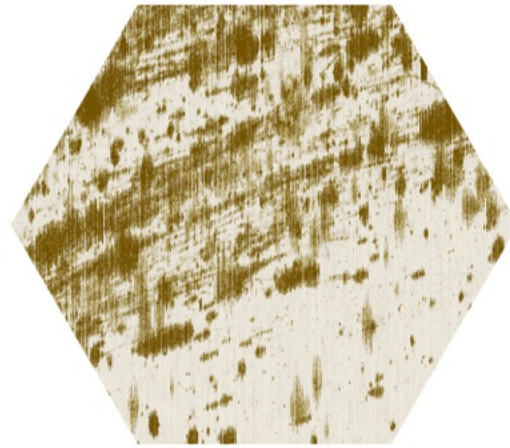
ENIGMATIC



JAPANESE INK



SEAGLASS



FRENCH OCHRE

Capturing the expressive style from a large canvas painted outdoors by hand, abstract markings twist and turn across these hexagonal tiles, each measuring 250 × 215mm. Contemporary and statemental, Enigmatic is inspired by the mid-century phenomenon of kinetic art.

250 × 215 × 9mm / Porcelain / Matt / Indoors / Wall & Floor



ENIGMATIC - FRENCH OCHRE



ENIGMATIC - JAPANESE INK



ENIGMATIC - SEAGLASS



ENIGMATIC - FRENCH OCHRE



BODEGA - TEMPLE GREY/BLACK EARTH



BODEGA - INDIGO/AMAZONIA

TESSELLATION



ECRU



JAPANESE INK



POSITANO

A striking design with instant impact, Tessellation showcases graphic lines in a repeating geometric tile formation. Each hexagonal tile measures 250 x 215mm.

250 x 215 x 9mm / Porcelain / Matt / Indoors / Wall & Floor

TESSELLATION - JAPANESE INK





TESSELLATION - ECRU

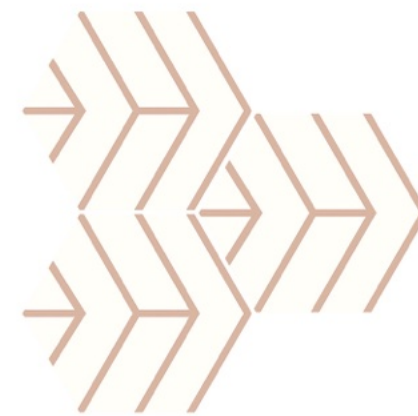


TESSELLATION - POSITANO

GET THE LOOK



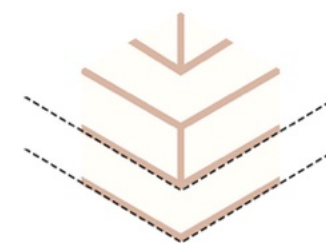
SOUTH



WEST



RADIATE



DIRECTION

ONE TILE, FOUR DESIGN POSSIBILITIES

The Tesselation tile can create three striking design layouts depending on which way the large arrow is facing when applied to your floor/wall.

South creates a lovely zig zag pattern that sits horizontally across a tiled surface or for a vertical look use the West format, turning the points outwards creates our Radiate option.

Scan the QR code to view our 'GET THE LOOK' page explaining how to arrange your tiles.